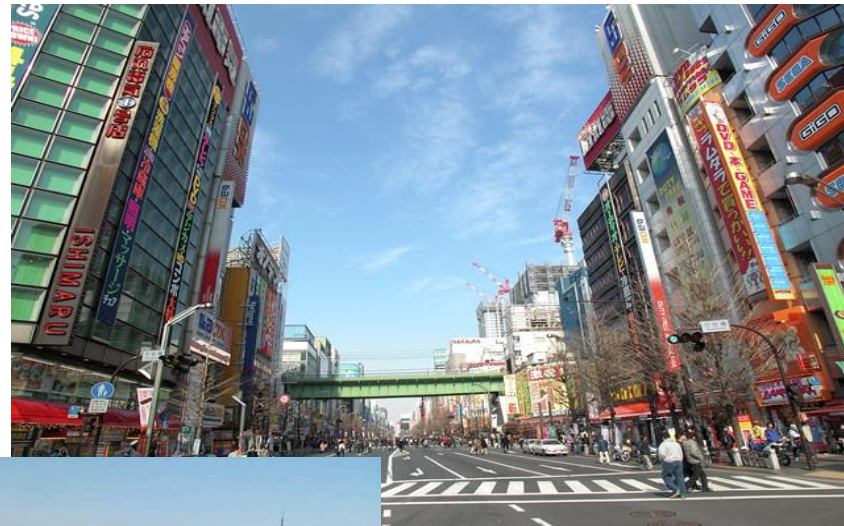


# the Chaos of Tokyo



# Contents

- ◆ the landscape of Tokyo - New and Old -
- ◆ Example: Asakusa
  - in the scenery of Asakusa
  - details
    - the Street
    - the Colors
- ◆ Conclusion
- ◆ Comparison of Beijing and Tokyo

the landscape of Tokyo

New (Westernism) and Old (Orientalism)



Roppongi Hills and downtown streetscape





The Old town of TSUKUDAZIMA island  
and New town (Okawabata-River City)



Akihabara [the famous electronic town]  
and IT facility “Akibahara Cross Media”





The separation of new and old cause confusion of landscape.



# Example: Asakusa





an isolation is contained  
in the scenery of Asakusa



OLD: *SENSOJI* Temple

NEW: ASAKUSA VIEW HOTEL and modern buildings

The isolation of a time is looked at by the scene even in Asakusa said to be Japanese-Style town.

→ Let's be still more detailed  
and see the characteristic of STREETS and COLORS  
in ASAKUSA.



# the STREET LANDSCAPE in Asakusa.

27 Shopping Streets Here.

These are the same town... ASAKUSA.



Streets are "maintained" without permission...  
→ the Disharmony is caused.







## the COLORS of Asakusa

The traditional colors mix with commercial colors and are used in Asakusa.

OLD (Traditional) colors: quiet (settled) colors,  
NEW (Commercial) colors: vivid colors near primary colors.

→ Asakusa becomes the town of confused impression.

# Conclusion

Tokyo is confused by separation old new and old.

It's one of the strong reason of Chaos of Tokyo.



# Beijing and Tokyo

Charactaristic common



Beijing's NEW and OLD

# Difference between Tokyo and Beijing



Tokyo



Beijing